



+61 2 4374 1655



info@mscmoto.com



www.mscmoto.com



APEX BAR MOUNTS INSTALL INSTRUCTIONS

APEX BAR MOUNTS INSTRUCTIONS FOR: Yamaha Tenere 700

We appreciate your support and hope you enjoy your ride more than ever after this installing our products!

If you have any questions regarding the fitment or function of this product please call or message us 02 43741655 or info@mscmoto.com

MSC Products Australia does recommend this installation be completed by a competent mechanically minded person with the correct tools and equipment. Incorrect installation of after market parts to motorcycles can result in a product under performing, damaging the motorcycle or be harmful to the rider. Please take care when working on your motorcycle.

PARTS INCLUDED IN KIT

- 1) M8 hex head bolts - 4x pcs
- 2) Top clamping cap - 2x pcs
- 3) Mid clamp - 2x pcs
- 4) Lower main body - 2x pcs
- 5) Polyurethane dampers - 8x pcs
- 6) Clamping sleeves - 4x pcs
- 7) T7 Bar Risers



Torque wrench is highly recommended to guarantee correct installation.

PLEASE NOTE:

Assembly should be inspected after every crash and replace damaged parts if necessary. Dampers will need to be checked for deformation after 30hrs of ride time or 2 times a year if riding hours are low.

The Mounts are not left or right specific, either clamp can be mounted on any side.

APEX BAR MOUNT DETAILS

VIBRATION:

Vibration is a strong factor in causing arm pump and numbness in a riders hands. By adding in a rubberised barrier between the chassis and the handlebars themselves the vibrations can be reduced and isolated before effecting the rider.

IMPACTS:

Impacts and crashes are also reduced with the inclusion on a damped handlebar system, relieving pressure to the riders wrists and hands during harsh impacts on a long ride.



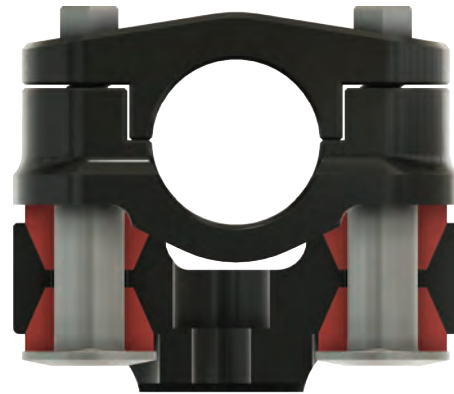
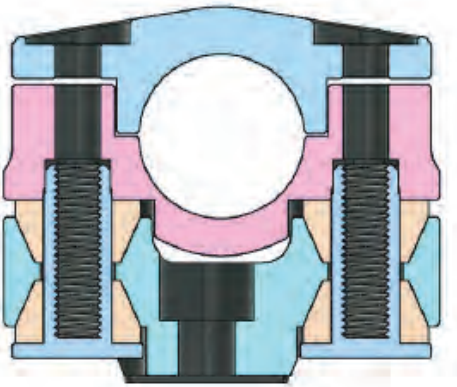
APEX BAR MOUNTS INSTRUCTIONS FOR: Yamaha Tenere 700

HOW TO INSTALL:

Start with putting the bike on a secure stand and getting some containers to place the small screws you need to remove.

Pro Tip: We also recommend that you also take some photos to help remember where everything goes!

Cross section of Apex bar mounts - Reference for install



1.

Start by removing handlebars and OEM handlebar mounts from top triple clamps.

2.

Place the new bar risers on the clamps, as seen in image.. then re-assemble APEX mounts main body (4) with dampers (5) and sleeves(6). Place 1 damper on each sleeve. Insert sleeve into main body then place dampers on to the top side of sleeve and main body.



APEX BAR MOUNTS INSTRUCTIONS FOR: Yamaha Tenere 700

HOW TO INSTALL:

3.

The Tenere has multiple mounting positions for the APEX Mounts, depending on your desired position, different sized bolts are supplied.

CENTRE MOUNT POINT

If mounting in centre point, use the longest bolt supplied through both bar riser and apex mount.

FOWARD-REARWARD MOUNT POINT

If mounting in foward or rearward point, use the bolt with the straight sided head through the bar riser to the clamps, then using the M10 x 35mm bolt supplied to fix the appex mount to the forward or rearward point on the bar riser 40nm..

The bar clamp has a 5mm offset, make sure both clamps are fixed in the same direction, direct the hex from clamping sleeves to have points to the front of the bike.



5.

Place mid clamp (3) onto the clamp sleeves (6) making sure the hexes align with each other. If not aligned, rotate hex until both parts sit together. See image following page.

6.

Place handlebars into mid clamps (3)

7.

Place top clamping cap (2) on top of bars and tighten using M8hex bolts (1). Tighten to 20nm.
Please Note: Excessive tightening of the handlebars will not increase tension on the polyurethane dampers.